

Our 29th online breastfeeding conference

A passion for breastfeeding



Online Breastfeeding Conference
Sept 15 - Dec 15, 2026

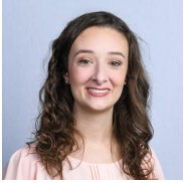
www.ilactation.com



Jointly provided by [Interstate Postgraduate Medical Association](#)
and [iLactation](#)

Presentations

A passion for breastfeeding, our 29th online breastfeeding conference in English covers a wide range of topics to inform and guide your clinical practice and to inspire and challenge your thinking about breastfeeding, nutrition and human lactation.



Weighing the evidence: GLP-1 medications and the breastfeeding dyad

Sarah Ayers, PharmD



Mastitis: research and reflections

Lisa Amir, MBBS, Mmed, PhD, IBCLC



The unique challenges of Black breastfeeding

Janice Clarke, BS, IBCLC



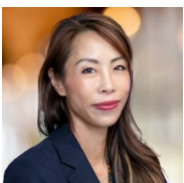
Findings from the antenatal expressing DAME trial

Anita Moorhead, PHD, RN, RM, IBCLC



Voices of migrant mothers: breastfeeding support to migrants, refugees and asylum seekers

Ana Lopes, PhD, SLT



Parity and lactation enhances immunity and protects against breast cancer

Sherene Loi, MD, PhD



Wilding the newborn gut: breastfeeding's microbial inheritance

James Kinross, BSc(Hons), MBBS, PhD, FRCS(Gen)



From policy to practice: implementing the WHO Code as national law- international experiences and Thailand's case study

Chompoonut Topothai, MD, MPH, PhD



Late onset decreased milk flow

Laura Patterson, IBCLC



Standing by the Code: a framework for justice in infant feeding

Lourdes Santaballa Mora, MS, IBCLC, CLAAS, IYCFS



Breastfeeding and neurodiversity

Emily Lunny, IBCLC



Human milk, the microbiome, and infant Immune programming: evaluating the evidence and navigating the gaps

Ashley Robinson, DrPH, IBCLC, CLE, CLD



HTLV-1 and feeding babies in Central Australia

Sue Roth, Midwife, RN, MPHTM, IBCLC



Perinatal mood disorders and self-efficacy: implications for lactation practice

Michelle Stora Grassia, BS, IBCLC & Ashley Sward, PsyD, IMH-E



Spit takes: managing infant reflux

Megan Dunn, IBCLC, RLC, C-NDLS



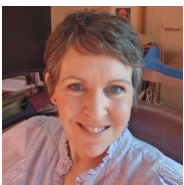
Therapeutic alliance in lactation consulting: the influence on emotional availability, parental sense of competence, and breastfeeding self-efficacy

Hilla Lev Ran Hotam, MA, IBCLC



Breastfeeding with a cleft palate

Maaske Treurniet, MA, SLP



Empowering and liberating, or subjugating and confining? Feminist perspectives on breastfeeding from the 1800s to the present day

Caoimhe Whelan, BEng, IBCLC, MSc(research)



Read the nipple, looking beyond the surface of breastfeeding problems – what can the nipple and the mother–baby dyad tell us?

Joke Muyldermans, RM, MSc, IBCLC



Birth matters: how intrapartum care shapes breastfeeding outcomes

Elaine Campbell, IBCLC, BSc, SAC Dip

Full presentation details available at <https://ilactation.com/conferences/our-29th-online-breastfeeding-conference/presentations/>

Continuing Education

The following continuing education credits will be applied for:

- CERPS and pre-exam hours for lactation consultants from the [International Board Lactation Consultant Examiners \(IBLCE\)](#).
- CMEs – *AMA PRA Category 1 Credit(s)*[™] for both physicians and non-physicians from the Accreditation Council for Continuing Medical Education (ACCME).
- CNEs – contact hours for nurses from the American Nurses Credentialing Center (ANCC) and the California Board of Registered Nursing.

CPD points from the Australian College of Midwives will not be applied for this year as they are no longer WHO Code compliant.

Conference Timeline

1. iLactation conference *A passion for breastfeeding* will be online from Sept 15 – Dec 15, 2026.
2. Earlybird registration begins July 1, 2026.
3. Standard registration begins on August 8, 2026.
4. iLactation conference *A passion for breastfeeding* officially begins on September 15, 2026.
5. Questions asked of speakers on or before October 10 will be answered by October 20, 2026.
6. Questions asked of speakers on or before November 21 will be answered by December 7, 2026.
7. Presentations will not be available after December 15, 2026.
8. Handouts will be available for download throughout the conference. Final date for download by participants will be December 15, 2026.
9. Certificates will be available for download throughout the conference.

Registration Information

Below you will find the registration fees per person. Payment for the conference is made through our updated payment system, Stripe, which identifies the country where you are paying from and gives you the choice of credit or debit card and other options based on your location. Please register for our conference based on your current country of residence. The country categories are aligned with the World Bank country categories: high-income (A), upper-middle-income (B), lower-middle-income (C), and low-income (D) countries. If there is any discrepancy in your registration between your payment location and your country of residence, we will contact you for further information.

The conference is online with presentations viewable until Sept 15, 2026.

	Early Bird	Standard	Early Bird Group	Group
Cat. A Countries	US\$215	US\$240	US\$205	US\$220
Cat. B, C & D Countries	US\$65	US\$75	US\$55	US\$65

Please contact us at info@ilactation.com for special registration rates for large groups of **over 30 participants**, eg hospital staff, WIC, breastfeeding coalitions or peer support counsellors.

Participants will have unlimited access to all of the presentations until the end of the conference on June 4, 2026, including our Ask the Speaker facility, Certificates and the Handouts. Handouts and Certificates will be available for download throughout the conference. The Conference is a complete package; it is not possible for you to register for individual presentations.

iLactation uses PayPal as the main payment method. If Paypal is not available in your country or you encounter other difficulties with PayPal please contact us at info@ilactation.com for an alternative payment method.

Membership Categories

Category A:

American Samoa, Andorra, Antigua and Barbuda, Aruba, Australia, Austria, The Bahamas, Bahrain, Barbados, Belgium, Bermuda, British Virgin Islands, Brunei Darussalam, Bulgaria, Canada, Cayman Islands, Channel Islands, Chile, Croatia, Curaçao, Cyprus, Czechia, Denmark, Estonia, Faroe Islands, Finland, France, French Polynesia, Germany, Gibraltar, Greece, Greenland, Guam, Guyana, Hong Kong SAR, Hungary, Iceland, Ireland, Isle of Man, Israel, Italy, Japan, Korea Rep. (South), Kuwait, Latvia, Liechtenstein, Lithuania, Luxembourg, Macau, Malta, Monaco, Nauru, Netherlands, New Caledonia, New Zealand, Northern Mariana Islands, Norway, Oman, Palau, Panama, Poland, Portugal, Puerto Rico, Qatar, Romania, Russian Federation, San Marino, Saudi Arabia, Seychelles, Singapore, Sint Maarten (Dutch part), Slovak Republic, Slovenia, Spain, St Kitts and Nevis, St Martin (French part), Sweden, Switzerland, Taiwan, Trinidad and Tobago, Turks and Caicos Islands, United Arab Emirates, United Kingdom, United States, Uruguay, Virgin Islands (US).

Category B:

Albania, Algeria, Argentina, Armenia, Azerbaijan, Belarus, Belize, Bosnia and Herzegovina, Botswana, Brazil, China, Colombia, Costa Rica, Cuba, Dominica, Dominican Republic, Ecuador, El Salvador, Equatorial Guinea, Fiji, Gabon, Georgia, Grenada, Guatemala, Indonesia, Iraq, Iran, Marshall Islands, Jamaica, Kazakhstan, Kosovo, Libya, Malaysia, Maldives, Marshall Islands, Mauritius, Mexico, Moldova, Mongolia, Montenegro, Namibia, North Macedonia, Paraguay, Peru, Serbia, South Africa, St Lucia, St Vincent and the Grenadines, Suriname, Thailand, Tonga, Türkiye, Turkmenistan, Tuvalu, Ukraine, Venezuela.

Category C:

Angola, Bangladesh, Benin, Bhutan, Bolivia, Cabo Verde, Cambodia, Cameroon, Comoros, Congo Rep., Côte d'Ivoire, Djibouti, Egypt, Eswatini, Ghana, Guinea, Haiti, Honduras, India, Jordan, Kenya, Kiribati, Kyrgyz Republic, Lao PDR, Lebanon, Lesotho, Morocco, Mauritania, Micronesia Fed St., Myanmar, Nepal, Nicaragua, Nigeria, Occupied Palestinian territories, Pakistan, Papua New Guinea, Philippines, Samoa, São Tomé and Príncipe, Senegal, Solomon Islands, Sri Lanka, Tajikistan, Tanzania, Timor-Leste, Tunisia, Uzbekistan, Vanuatu, Vietnam, Zambia, Zimbabwe.

Category D:

Afghanistan, Burkina Faso, Burundi, Central African Republic, Chad, Democratic Republic of Congo, Eritrea, Ethiopia, Democratic Republic of Korea, The Gambia, Guinea-Bissau, Liberia, Madagascar, Malawi, Mali, Mozambique, Niger, Rwanda, Sierra Leone, Somalia, South Sudan, Sudan, Syria, Togo, Uganda, Yemen.

Group Registrations

Group registration will apply to groups of 6 or more delegates registering in one transaction. The organizer of the group needs to contact us at info@ilactation.com with the list of names and email addresses for all your group members, and any purchase order numbers required by your organization. We will invoice the organization or group organizer for one registration payment, which will be the total amount due for the number of delegates multiplied by the group registration price. (eg 6 delegates x \$205 = \$1,230) We will provide a group receipt. Only registered paid group members are eligible for continuing education points.