

Our 28th online breastfeeding conference

Knowledge, kindness and connection in lactation



Online Breastfeeding Conference

Online: March 4 - June 4, 2026

www.ilactation.com



Jointly provided by [Interstate Postgraduate Medical Association](http://www.ipma.org)
and [iLactation](http://www.ilactation.com)

Presentations



Breastfeeding messages - are we self-sabotaging?

Rahmat Bibi Bagus, MBChB, IBCLC



Understanding the breastfeeding landscape in Africa

Lope Adejuyigbe, MBBS, CBS, IBCLC



Making sense of postpartum anxiety and lactation

Gretchen Becker Crabb, MSE, LPC, OTR/L, CLC, IMH-E



Impact of breastfeeding duration on brain structure at 10 years of age

Christian Stephan-Otto, PhD



What do women want? Supporting infant feeding choices through education, honesty and advocacy.

Linda Deys, Registered Nurse, Endorsed Midwife, IBCLC, PhD



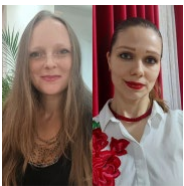
Underestimated and under-treated: the impact of vitamin B12 deficiency during pregnancy and breastfeeding

Maaïke van Broekhoven, RN, IBCLC



Breastfeeding considerations among culturally and linguistically diverse and Indigenous Australian populations

Maria Oliveri, MPhil, RN, Midwife, IBCLC



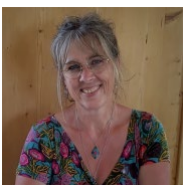
Breastfeeding during emergencies: supporting mothers during 2024-2025 war in Lebanon

Nadiya Dragan, IBCLC, LLL Leader and Veronica Rohalevich, CBS, LLL Leader



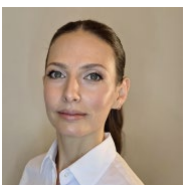
Are we weaning too early? Beyond the 2 year mark: what research and practice reveal about effects of full term breastfeeding

Nadiya Dragan, IBCLC, LLL Leader



Compassionately inquiring into the story of your life

Marianne Kolkena, MSc, IBCLC



Human lactation: a human right

Maria da Silva, BA, JD, LLM



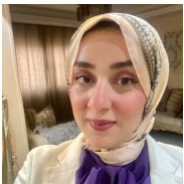
The quiet crisis: how sleep training culture undermines breastfeeding

Charlotte Treitl, BSc, IBCLC



Supporting breastfeeding practices of incarcerated mothers

Shela Hirani, PhD, MScN, BScN, RN, IBCLC, FAAN



Human milk role in modulating the gut villi function

Nada Atef, MD, PhD, ped GI dip, IBCLC



Breastfeeding vs breastmilk feeding

Rahmat Bibi Bagus, MBChB, IBCLC and Jean Ridler, RN, RM



Journey: from breastfeeding champion to IBCLC and the power of connection in lactation and family care

Muswamba Mwamba, DrPH, MPH, MS, IBCLC, RLC



Lactation support after gestational diabetes: an evidence review

Kimberly Doughty, MPH, PhD, CHES



When oral function affects feeding: myofunctional approach

Cristina Vancsa, MD, IBCLC



Grandparents' knowledge, attitude and experiences supporting breastfeeding - an intergenerational approach to breastfeeding support

Jennifer Abbass-Dick, RN, IBCLC, PhD

Continuing Education

The following continuing education credits will be applied for:

- CERPS and pre-exam hours for lactation consultants from the [International Board Lactation Consultant Examiners \(IBLCE\)](#).
- CMEs – *AMA PRA Category 1 Credit(s)™* for both physicians and non-physicians from the Accreditation Council for Continuing Medical Education (ACCME).
- CNEs – contact hours for nurses from the American Nurses Credentialing Center (ANCC) and the California Board of Registered Nursing.

CPD points from the Australian College of Midwives will not be applied for this year as they are no longer WHO Code complaint.

Conference Timeline

1. iLactation conference *Knowledge, kindness and connection in lactation* will be online from March 4 – June 4, 2026.
2. Earlybird registration begins January 1, 2026.
3. Standard registration begins on February 1, 2026.
4. iLactation conference *Knowledge, kindness and connection in lactation* officially begins on IBCLC Day, March 4, 2026.
5. Questions asked of speakers on or before April 11 will be answered by April 21, 2026.
6. Questions asked of speakers on or before May 21 will be answered by May 31, 2026.
7. Presentations will not be available after June 4, 2026.
8. Handouts will be available for download throughout the conference. Final date for download by participants will be June 4, 2026.
9. Certificates will be available for download throughout the conference. Final date for download by participants will be June 4, 2026.

Registration Information

Below you will find the registration fees per person. Payment for the conference is made through our updated payment system, Stripe, which identifies the country where you are paying from and gives you the choice of credit or debit card and other options based on your location. Please register for our conference based on your current country of residence. The country categories are aligned with the World Bank country categories: high-income (A), upper-middle-income (B), lower-middle-income (C), and low-income (D) countries. If there is any discrepancy in your registration between your payment location and your country of residence, we will contact you for further information.

The conference is online with presentations viewable until June 4, 2026.

	Early Bird	Standard	Early Bird Group	Group
Cat. A Countries	US\$215	US\$240	US\$205	US\$220
Cat. B, C & D Countries	US\$65	US\$75	US\$55	US\$65

Please contact us at info@ilactation.com for special registration rates for large groups of **over 30 participants**, eg hospital staff, WIC, breastfeeding coalitions or peer support counsellors.

Participants will have unlimited access to all of the presentations until the end of the conference on June 4, 2026, including our Ask the Speaker facility, Certificates and the Handouts. Handouts and Certificates will be available for download throughout the conference. The Conference is a complete package; it is not possible for you to register for individual presentations.

iLactation uses PayPal as the main payment method. If Paypal is not available in your country or you encounter other difficulties with PayPal please contact us at info@ilactation.com for an alternative payment method.

Membership Categories

Category A:

American Samoa, Andorra, Antigua and Barbuda, Aruba, Australia, Austria, The Bahamas, Bahrain, Barbados, Belgium, Bermuda, British Virgin Islands, Brunei Darussalam, Bulgaria, Canada, Cayman Islands, Channel Islands, Chile, Croatia, Curaçao, Cyprus, Czechia, Denmark, Estonia, Faroe Islands, Finland, France, French Polynesia, Germany, Gibraltar, Greece, Greenland, Guam, Guyana, Hong Kong SAR, Hungary, Iceland, Ireland, Isle of Man, Israel, Italy, Japan, Korea Rep. (South), Kuwait, Latvia, Liechtenstein, Lithuania, Luxembourg, Macau, Malta, Monaco, Nauru, Netherlands, New Caledonia, New Zealand, Northern Mariana Islands, Norway, Oman, Palau, Panama, Poland, Portugal, Puerto Rico, Qatar, Romania, Russian Federation, San Marino, Saudi Arabia, Seychelles, Singapore, Sint Maarten (Dutch part), Slovak Republic, Slovenia, Spain, St Kitts and Nevis, St Martin (French part), Sweden, Switzerland, Taiwan, Trinidad and Tobago, Turks and Caicos Islands, United Arab Emirates, United Kingdom, United States, Uruguay, Virgin Islands (US).

Category B:

Albania, Algeria, Argentina, Armenia, Azerbaijan, Belarus, Belize, Bosnia and Herzegovina, Botswana, Brazil, China, Colombia, Costa Rica, Cuba, Dominica, Dominican Republic, Ecuador, El Salvador, Equatorial Guinea, Fiji, Gabon, Georgia, Grenada, Guatemala, Indonesia, Iraq, Iran, Marshall Islands, Jamaica, Kazakhstan, Kosovo, Libya, Malaysia, Maldives, Marshall Islands, Mauritius, Mexico, Moldova, Mongolia, Montenegro, Namibia, North Macedonia, Paraguay, Peru, Serbia, South Africa, St Lucia, St Vincent and the Grenadines, Suriname, Thailand, Tonga, Türkiye, Turkmenistan, Tuvalu, Ukraine, Venezuela.

Category C:

Angola, Bangladesh, Benin, Bhutan, Bolivia, Cabo Verde, Cambodia, Cameroon, Comoros, Congo Rep., Côte d'Ivoire, Djibouti, Egypt, Eswatini, Ghana, Guinea, Haiti, Honduras, India, Jordan, Kenya, Kiribati, Kyrgyz Republic, Lao PDR, Lebanon, Lesotho, Morocco, Mauritania, Micronesia Fed St., Myanmar, Nepal, Nicaragua, Nigeria, Occupied Palestinian territories, Pakistan, Papua New Guinea, Philippines, Samoa, São Tomé and Príncipe, Senegal, Solomon Islands, Sri Lanka, Tajikistan, Tanzania, Timor-Leste, Tunisia, Uzbekistan, Vanuatu, Vietnam, Zambia, Zimbabwe.

Category D:

Afghanistan, Burkina Faso, Burundi, Central African Republic, Chad, Democratic Republic of Congo, Eritrea, Ethiopia, Democratic Republic of Korea, The Gambia, Guinea-Bissau, Liberia, Madagascar, Malawi, Mali, Mozambique, Niger, Rwanda, Sierra Leone, Somalia, South Sudan, Sudan, Syria, Togo, Uganda, Yemen.

Group Registrations

Group registration will apply to groups of 6 or more delegates registering in one transaction. The organizer of the group needs to contact us at info@ilactation.com with the list of names and email addresses for all your group members, and any purchase order numbers required by your organization. We will invoice the organization or group organizer for one registration payment, which will be the total amount due for the number of delegates multiplied by the group registration price. (eg 6 delegates x \$205 = \$1,230) We will provide a group receipt. Only registered paid group members are eligible for continuing education points.

Please contact us at info@ilactation.com for special registration rates for large groups of **over 30 participants**, eg hospital staff, WIC, breastfeeding coalitions or peer support counsellors.