

21<sup>st</sup> Online breastfeeding conference

[www.iLactation.com](http://www.iLactation.com)

Registration: Now open

Conference online: Sept 25 - Dec 15, 2022

<b>Category A Countries</b> (includes Australia, Canada, UK & USA)	US\$220
<b>Category B, C &amp; D Countries</b> (includes Greece, India, Kenya, Philippines & South Africa)	US\$75

#### What's an online conference?

iLactation's online conference is as simple as watching an online video on your computer, phone or other device with an internet connection. Our speakers have made special video presentations for iLactation on their chosen topics.

Presentations can be viewed by registered participants at [www.iLactation.com](http://www.iLactation.com) after the conference begins on September 15 2022.

**Affordable** Continuing Education Points – CERPs, CMEs, CNEs & other CPD points

**Convenient** – view presentations on any computer, tablet or other device at any time that suits you!

**Enjoyable** – listen to all the presentations as many times as you like. Interact with other participants on social media (Facebook and Twitter).

**Economical** – no flights or accommodation required for the conference



[www.iLactation.com](http://www.iLactation.com)

#### EARN CERPS, NURSING CONTACT HOURS AND CME CREDITS

##### CERPS:

International Board Lactation Consultant Examiners (IBLCE) have approved this activity for Continuing Education Recognition Points (CERPs)  
CERPs Approval Number: **CL2022-1HK**  
CERPs allocated = 20.25 CERPs (17.00 L, 2.00 E & 1.00 R)  
Please note that if you are thinking of taking the IBLCE exam, our continuing education counts for 20.25 pre-exam education hours.

##### Other CPD Points:

This activity has been planned and implemented in accordance with the accreditation requirements and policies of the Accreditation Council for Continuing Medical Education (ACCME) through the joint providership of the Interstate Postgraduate Medical Association (IPMA) and iLactation. The IPMA is accredited by the ACCME to provide continuing education for physicians.

CME: *AMA PRA Category 1 Credit™* for both physicians and non-physicians.

CNE: Contact hours for nurses from the California Board of Registered Nursing

For information on how this activity fits in the Royal College Maintenance of Certification (MOC) Program, please visit the Royal College's website. For more personalized support, please contact the Royal College Services Centre +1 800.461.9598 or your local CPD Educator.

This educational activity for 20.25 contact hours is provided by Postgraduate Institute for Medicine.

Please contact [info@iLactation.com](mailto:info@iLactation.com) for more information about contact hours.



Online breastfeeding conference

iLactation provides the world's best  
**online breastfeeding conferences**  
for health professionals  
seeking continuing education

**20+ CERPs • 20+ CMEs • 20+ CNEs**



Registration:  
**Now open**  
Conference online:  
**Sept 15 - Dec 15 2022**

[www.iLactation.com](http://www.iLactation.com)

# BREASTFEEDING: BIOLOGICAL DIALOGUES

Full conference programme

Online: Sept 15 - Dec 15, 2022



**Kimarie Bugg, DNP, MPH, FAAN, IBCLC**  
Pump it up!



**Bodo Melnick, MD**  
Milk exosomal microRNAs in the prevention and treatment of necrotizing enterocolitis



**Dr Irma Hidayana**  
Exploitation of the COVID-19 pandemic by BMS companies in Indonesia



**Vanisha Nambiar, PhD, MSc**  
Newborn feeding practices and barriers of early initiation – a cross sectional study from a public hospital of Vadodara City, Gujarat, India



**Shela Hirani, PhD, IBCLC, RN**  
Breastfeeding challenges of refugee mothers in Canada: challenges, opportunities and the way forward



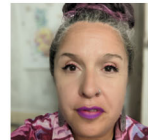
**Kelsey Bianca, MA, CLC**  
Gifts, growing, and love: depictions of breastfeeding in children's literature



**Nancy Wight, MD, IBCLC, FAAP, FABM**  
Breastfeeding & hypoglycemia: the highs & the lows (the never-ending story)



**Tom Van den Broeck, IBCLC**  
Instinctive nursing: simple and effective



**Lourdes Santaballa, MS, IBCLC, CLAAS, IYCFs**  
Also known as the WHO Code: understanding and making the International Code relevant



**Nikki Mills, BHB, MBChB, Dip Paeds, FRACS, IBCLC, PhD**  
The functional anatomy of sucking during breastfeeding: How amazing is the tongue!  
The functional anatomy of swallowing and airway protection in the breastfeeding infant: Understanding the impact of positioning



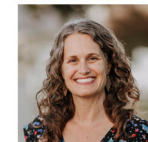
**Caominhe Whelan, BEng, IBCLC**  
Providing sensitive and person-centred breastfeeding support to women who have primary low milk supply



**Katrien Nauwelaerts, BA, MA, IBCLC**  
Professional guidance for parents with a crying baby: what questions to ask?



**Rachel Chiodo, BA, GradDip**  
“Look at me, Mum!” A focus on maternal gaze. Breastfeeding as a window into the visual dialogue between mother & baby



**Robin Kaplan, MEd, IBCLC**  
Providing virtual support to chest/breastfeeding families



**Christy Jo Hendricks, IBCLC, RLC, CLE, CCCE**  
Motivational Interviewing - launching communication skills for the perinatal professional



**Megan Dunn, BS, IBCLC**  
Lactation support for patients with larger breasts/chests



**Alexandra Glass, MD, IBCLC**  
Persistent pain with breastfeeding



**Eithne Murray, IBCLC, MA, BEd**  
How can we talk about breastfeeding?